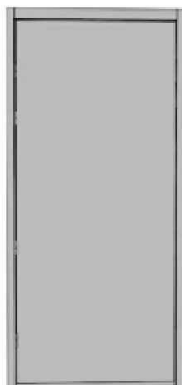


# installation instructions

**A**

1x



**B-1**

M10 x 120mm(nylon wall plug with Zinc plated screw) suitable for concrete or masonry wall openings.

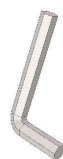
6x



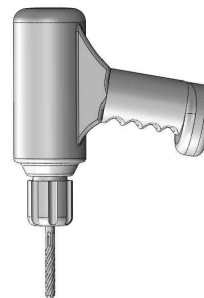
**B-2**

M8 x 100mm P/ck MTS (Pozi countersunk Machine screws) suitable for metallic, steelwork wall fixtures.

6x



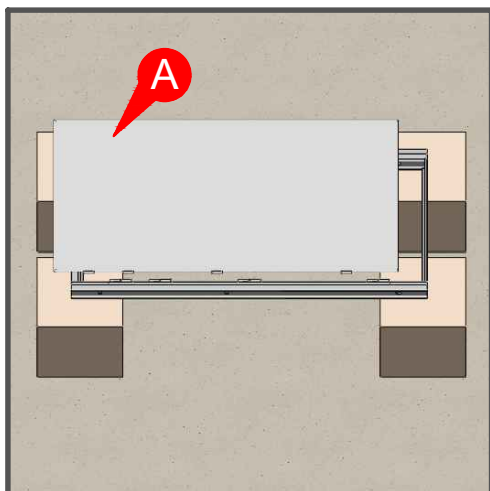
12mm Allen Wrench



**TOOLS(not provided)**

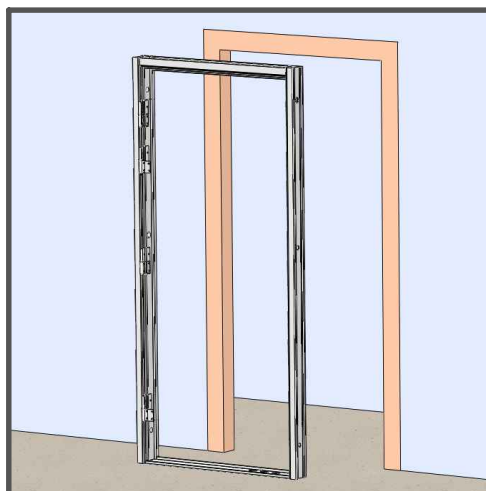
**1**

**A**



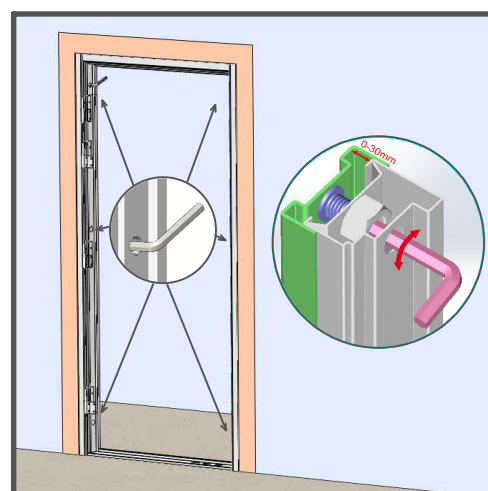
1. Separate the frame from the door slab by unscrewing the hinge plates.  
( Please inspect all parts and contact us immediately for replacements if needed.)

**2**



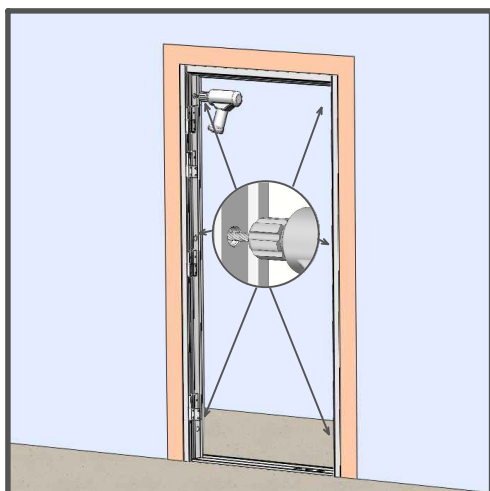
2. Install the frame to the wall opening space.

**3**



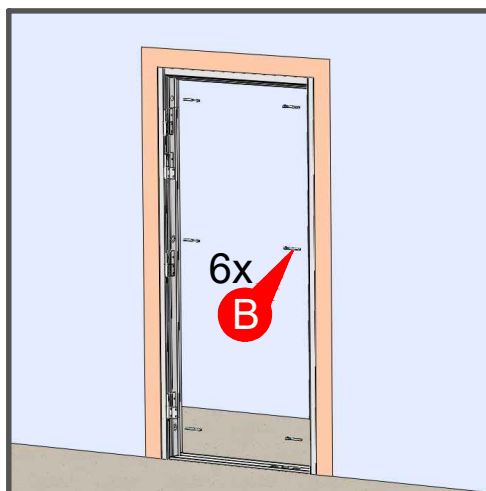
3. Adjust the frame to fit the wall opening properly by tightening the 6 anchors (attached to the frame) with a 12mm Allen Wrench (not provided).  
Warning: do not over tighten the anchors.

**4**



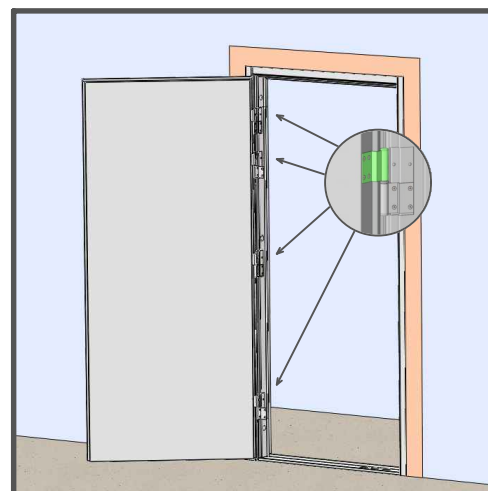
4. Drill a hole in the wall through the center of the hexagonal adjustable bolt to install the fixing screw. (If using our accessory B, handheld electric drill and 10mm drill bit are required for drilling)

**5**



5. Choose a proper wall-screws (B) based on your wall material type: B-1 or B-2. Place your chosen 6pcs wall-screws to each anchor and tighten them as shown in image.  
Recommend: For walls made of other materials, please purchase and install screws by yourself

**6**



6. Install the door slab onto the frame with the hinge plates. Make sure to align the slab with the frame properly to allow door opening and closing freely.