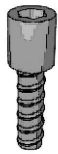


installation instructions

List of accessories

A

4x



B

2x



C-1

M10 x 120mm (nylon wall plug with Zinc plated screw) suitable for concrete or masonry wall openings.

6x



C-2

M8 x 100mm P/ck MTS (Pozi countersunk Machine screws) suitable for metallic, steelwork wall fixtures.

6x



D-1

4x



D-2

4x



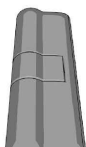
E

32x



F

1x



G

1x



H

2x



J

2x



K

2x



L

1x



Equipped with 2+6 keys

Door-Lock Kit

M-1

1x



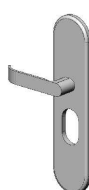
M-2

2x



M-3

1x



M-4

2x



M-5

1x



M-6

2x



M-7

1x



Movable Door-Handle Kit

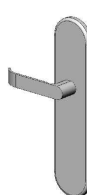
N-1

2x



N-2

1x



N-3

2x



N-4

1x



N-5

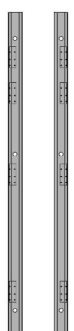
2x



Fixed Door-Handle Kit

O

2x



P

1x



Q

1x



R

2x



S

1x



T

1x



Side Frame
Symmetric components

Top Frame

Bottom Frame
(threshold)

Border clip plate

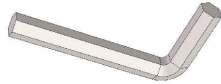
Active Slab

Inactive Slab

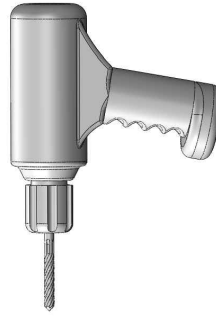
TOOLS(not provided)



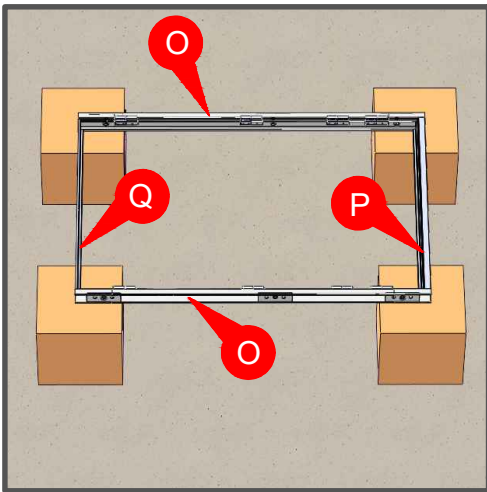
6mm Allen Wrench



12mm Allen Wrench

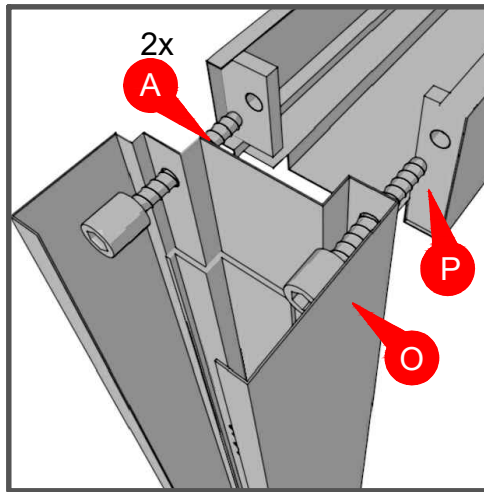


1



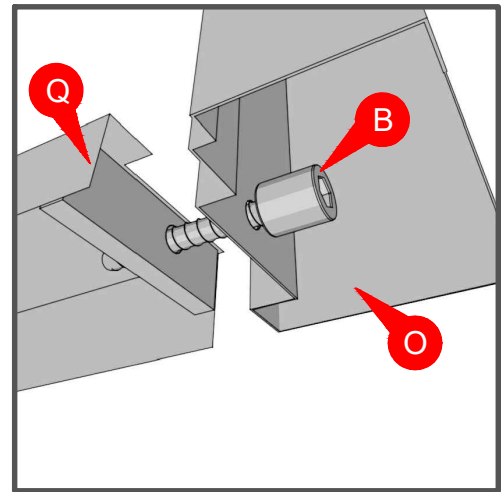
1. Place the frame on the floor or a flat surface.
(Please inspect all parts and contact us immediately for replacements if needed.)

2 2X



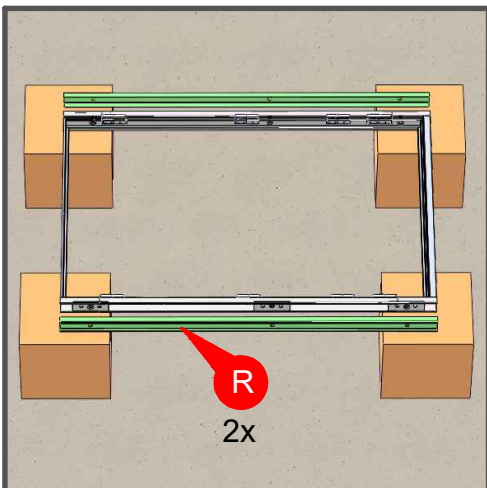
2. Connecting the side frame(O) and the upper frame(P) by 2 pcs bolts (A). (6mm allen key)

3 2X



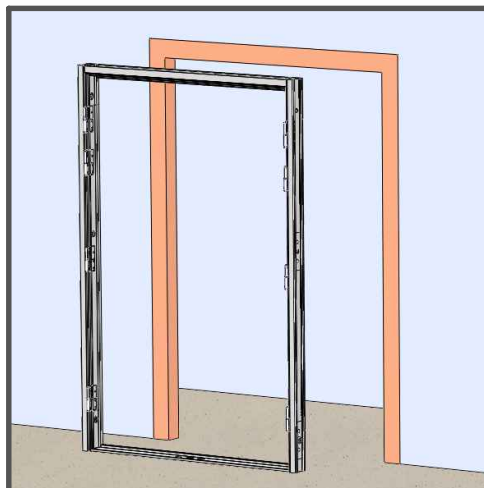
3. Connecting the side frame(O) and the bottom threshold frame(Q) by 2 pcs short bolts (B). (6mm allen key)

4



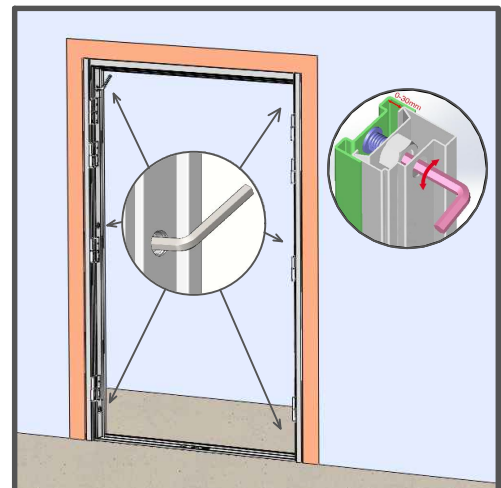
4. Install the border clamps on both sides, making sure the holes are aligned.

5



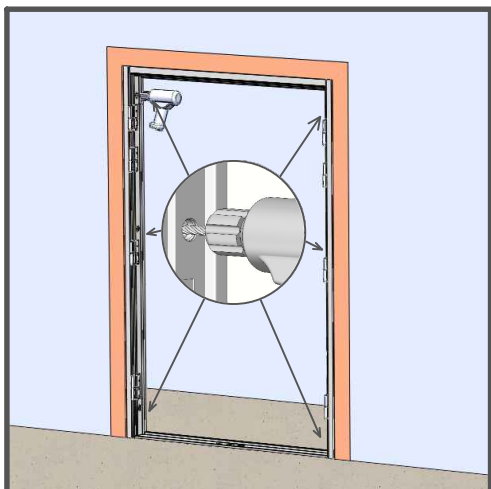
5. Install the frame to the wall opening space.

6

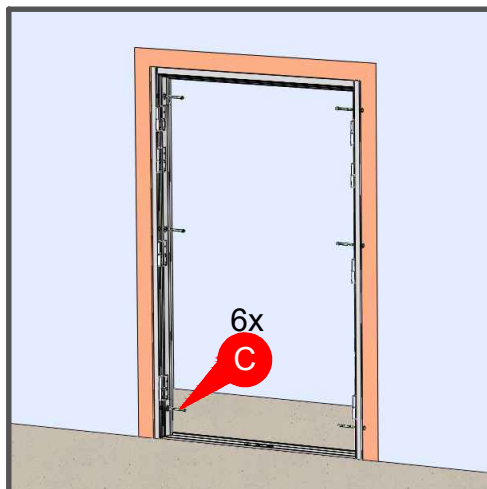


6. Adjust the frame to fit the wall opening properly by tightening the 6 anchors (attached to the frame) with a 12mm Allen Wrench (not provided).
Warning: do not over tighten the anchors.

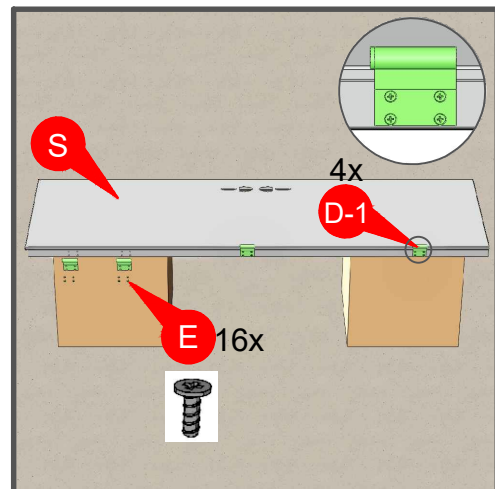
7



8



9

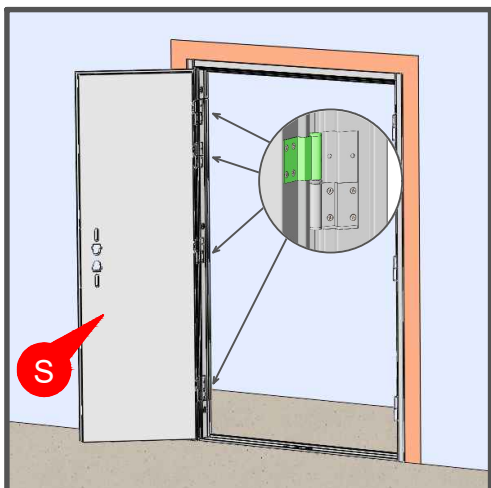


7. Drill a hole in the wall through the center of the hexagonal adjustable bolt to install the fixing screw. (If using our accessory C, handheld electric drill and 10mm drill bit are required for drilling)

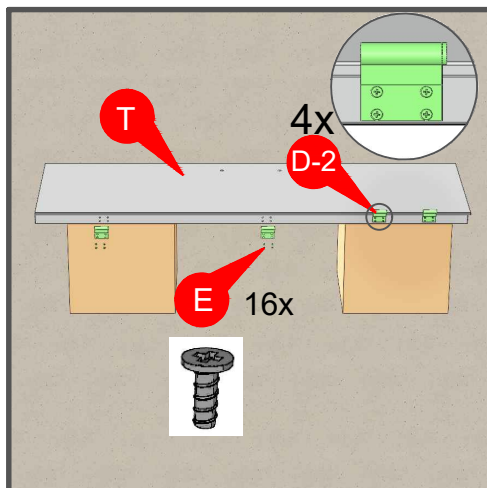
8. Choose a proper wall-screws (C) based on your wall material type: C-1 or C-2. Place your chosen 6pcs wall-screws to each anchor and tighten them as shown in image. Recommend: For walls made of other materials, please purchase and install screws by yourself.

9. Install the hinge plates (D1x4pcs) onto the Active Slab (S) with screws (E x16pcs).

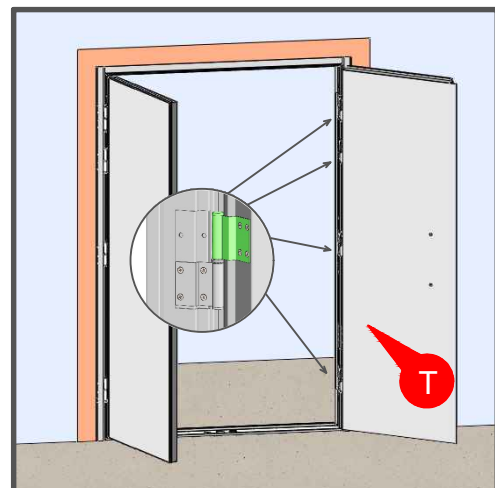
10



11



12

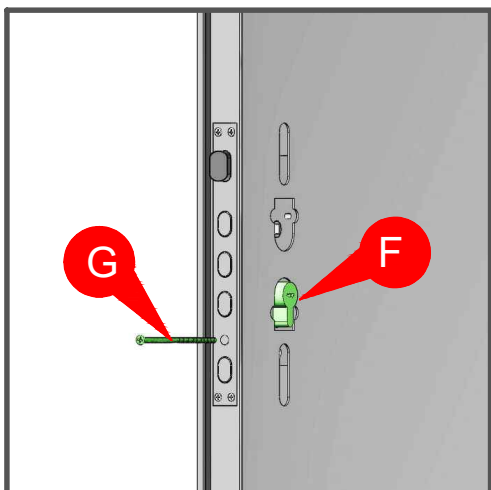


10. Install the Active Slab (S) onto the frame with both hinge plates lined up properly. Test the door slab by opening and closing to make sure it works.

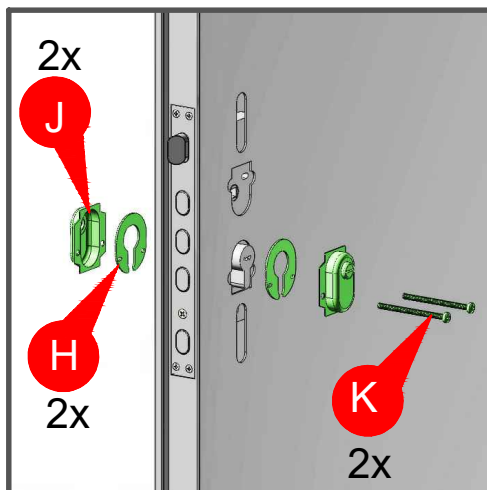
11. Install the hinge plates (D2x4pcs) onto the Inactive Slab (T) with screws (E x16pcs).

12. Install the Inactive Slab (T) onto the frame with both hinge plates lined up properly. Test the door slab by opening and closing to make sure it works.

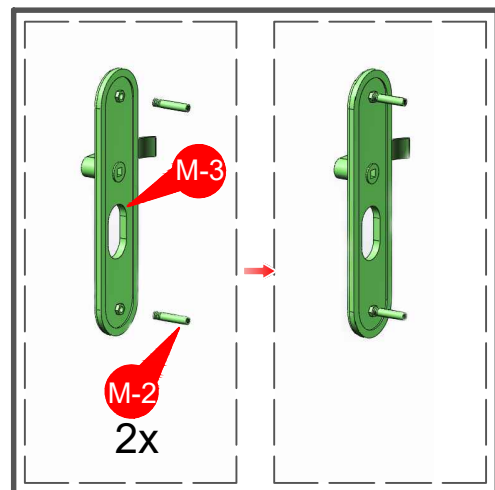
13



14



15

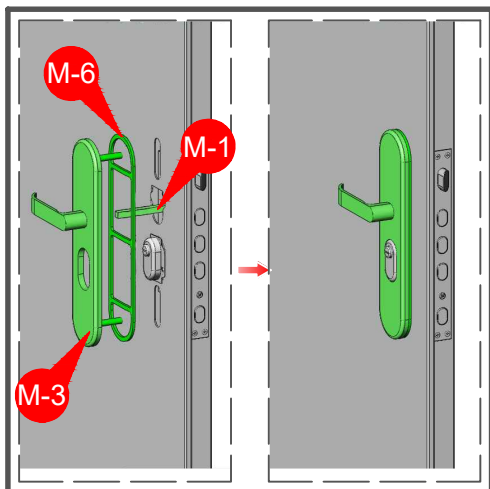


13. Install the lock cylinder F and thread a long screw G through the middle main lock. Used to fix the lock cylinder.

14. Tighten gasket H and cylinder head J in sequence with screw K.

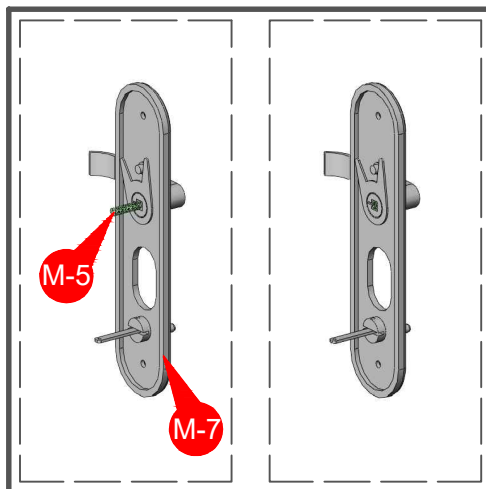
15. Fix the 2 screw M-2 connectors to the outside handle M-3.

16



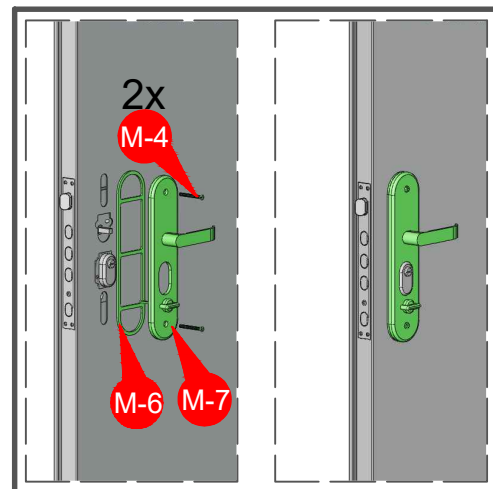
16. Install the square steel M-1 to ensure that the shaft is inserted correctly, then install the gasket M-6 and the external handle M-3 in sequence

17



17. Install spring M-5 into the hole of internal handle M-7.

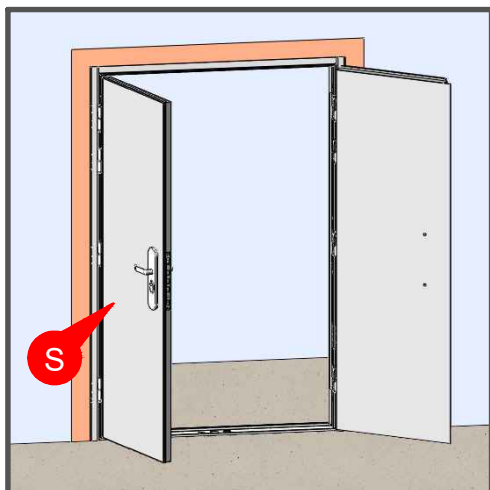
18



18. Move to the inside of the door, add washer M-6, and connect the inner and outer handles with 2 screws M-4.

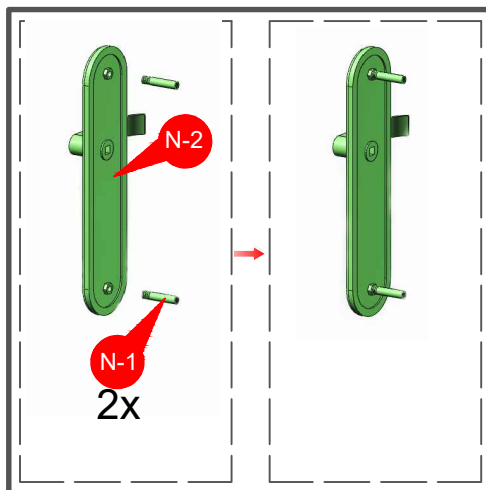
Warning: Do not overtighten the screws when installing the handle (this may cause the lock to get stuck)

19



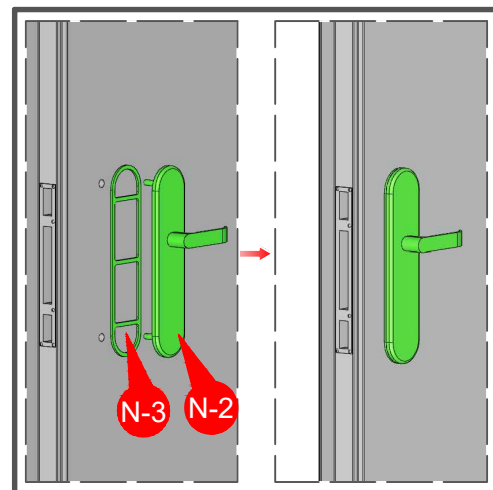
19. The installation of the movable door lock is completed (Steps 13-19 are used to install the lock and handle of the movable door).

20



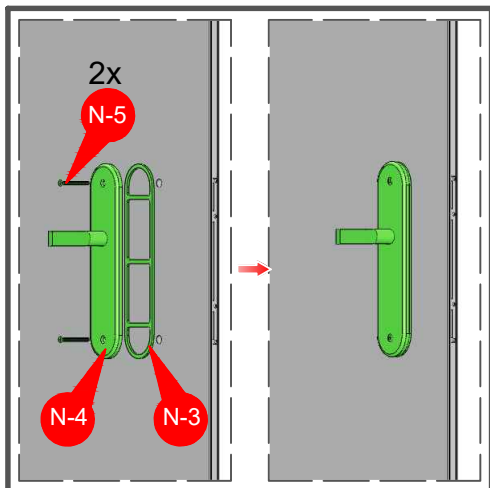
20. Fix 2 threaded joints N-1 onto the external fake handle N-2.

21



21. Place gasket N-3 and outer fake handle N-2 in sequence, aligning the holes.

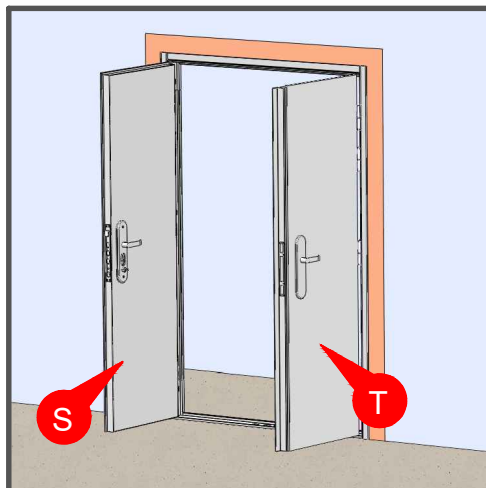
22



22. Move to the inside of the door, add washer N-3, and connect the inner and outer handles with 2 screws N-5.

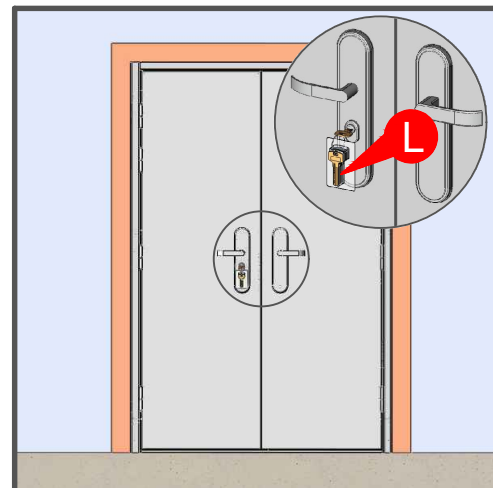
Warning: Do not overtighten the screws when installing the handle (this may cause the lock to get stuck)

23



23. Complete the installation of the fixed door fake handle (steps 20-23 are for the installation of the fixed door handle).

24



24. In the later stage, according to the actual application situation, the prompts on the key packaging box can be checked to complete the re debugging of the lock and ensure that the door can open and close smoothly.