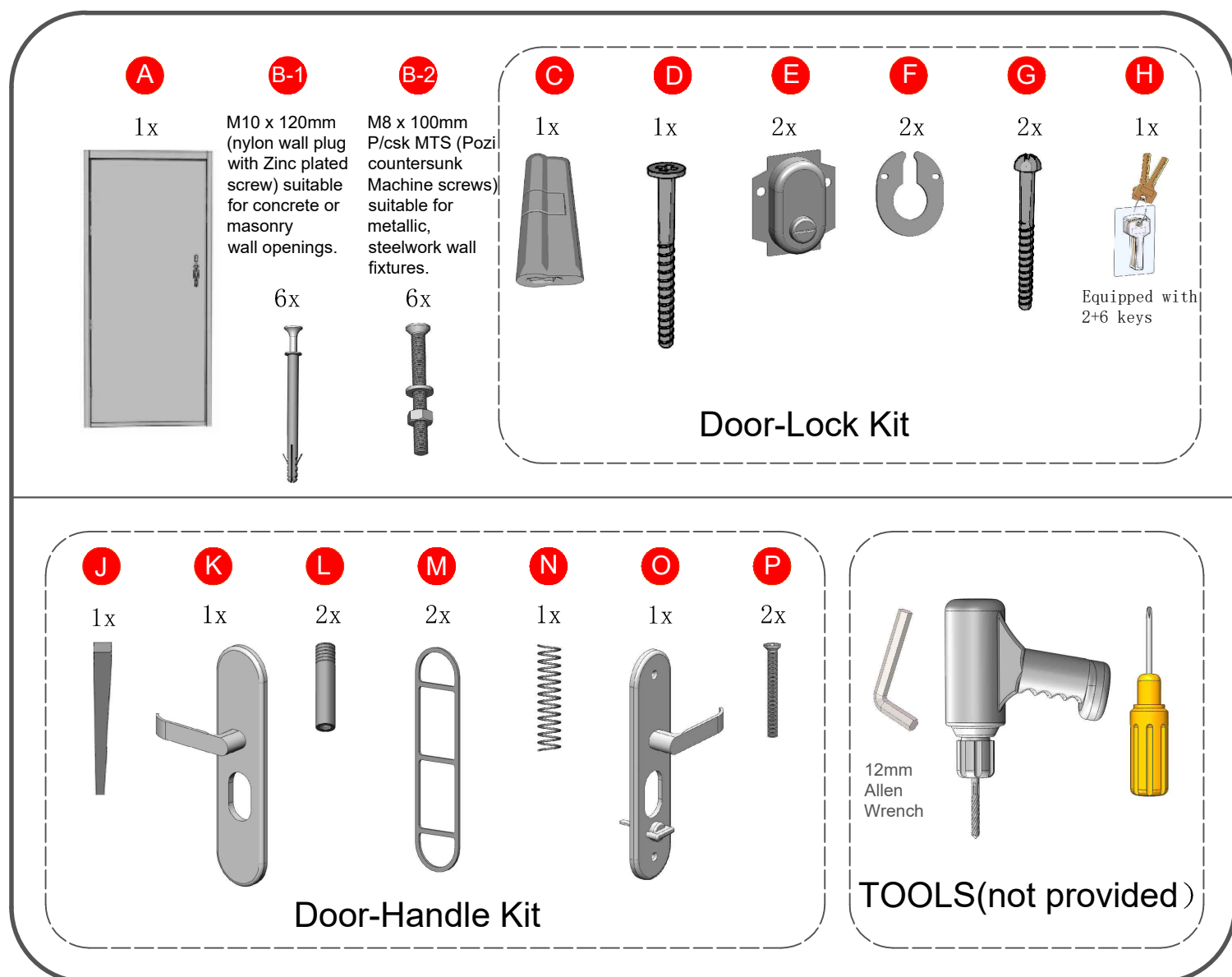
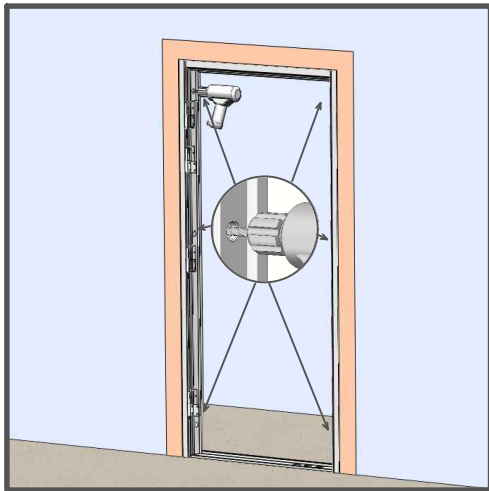


# installation instructions



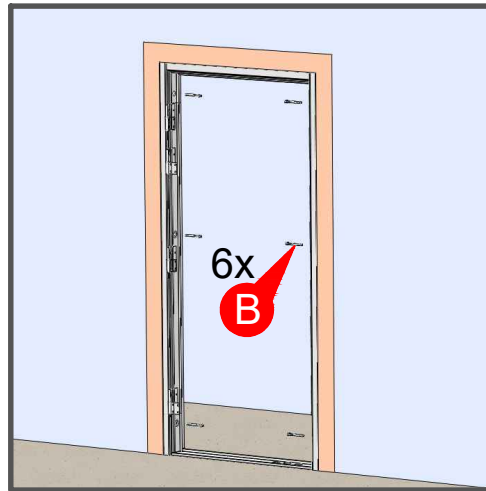
1. Separate the frame from the door slab by unscrewing the hinge plates.( Please inspect all parts and contact us immediately for replacements if needed.)  
Suggestion: Please use square steel (J) and handle (K) to assist in temporarily opening the door.
- 2.Install the frame to the wall opening space.
- 3.Adjust the frame to fit the wall opening properly by tightening the 6 anchors (attached to the frame) with a 12mm Allen Wrench (not provided).  
Warning: do not over tighten the anchors.

4



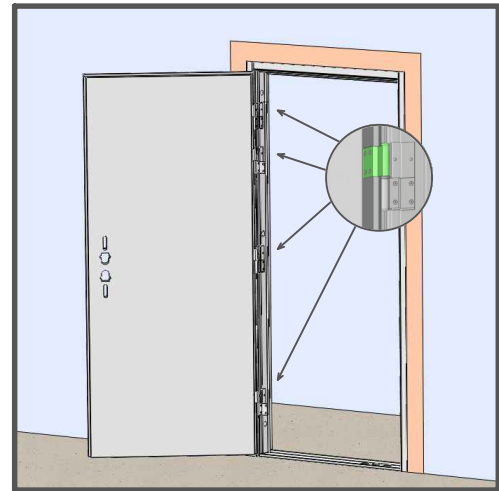
4. Drill a hole in the wall through the center of the hexagonal adjustable bolt to install the fixing screw. (If using our accessory B, handheld electric drill and 10mm drill bit are required for drilling)

5



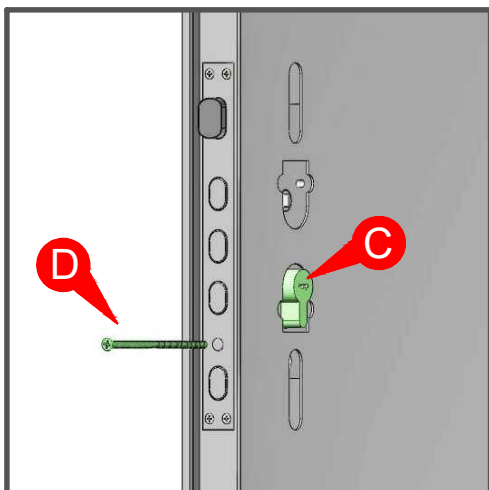
5. Choose a proper wall-screws (B) based on your wall material type: B-1 or B-2. Place your chosen 6pcs wall-screws to each anchor and tighten them as shown in image. Recommend: For walls made of other materials, please purchase and install screws by yourself

6



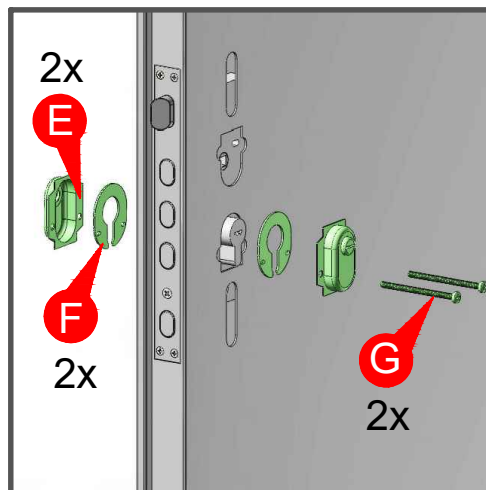
6. Install the door slab onto the frame with the hinge plates. Make sure to align the slab with the frame properly to allow door opening and closing freely.

7



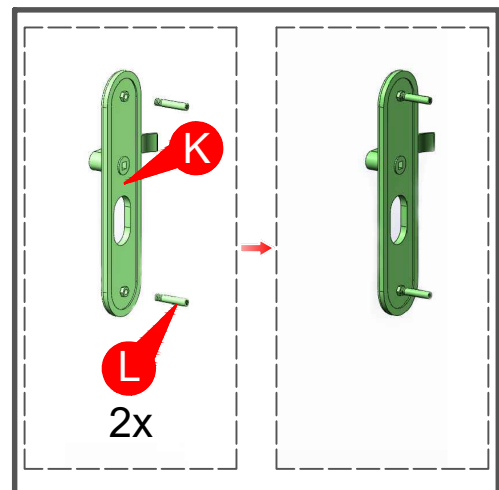
7. Install the lock cylinder C and thread a long screw D through the middle main lock. Used to fix the lock cylinder.

8



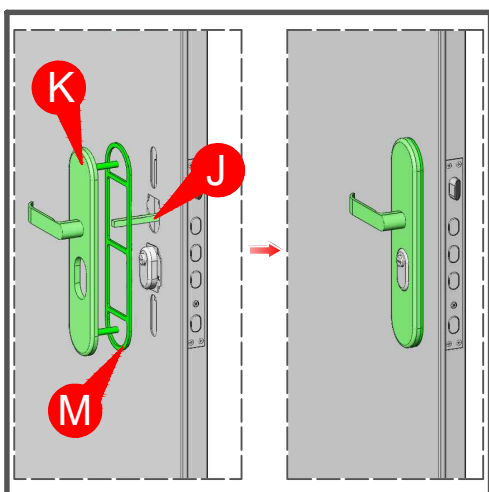
8. Tighten gasket F and cylinder head E in sequence with screw G.

9



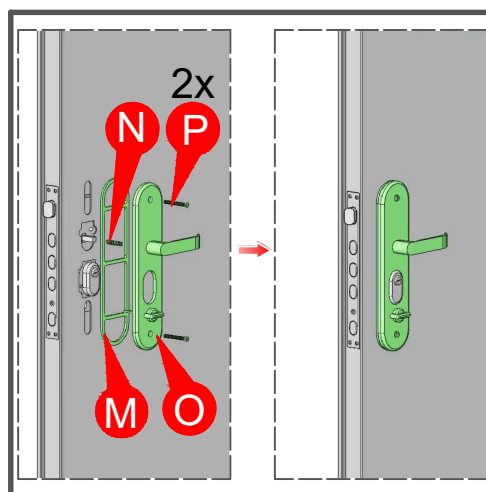
9. fix the 2 screw L connectors to the outside handle K.

10



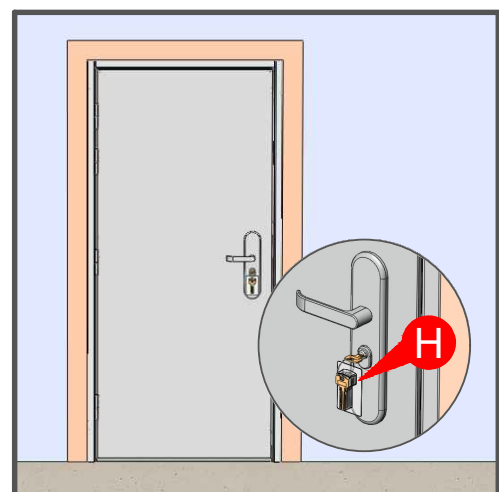
10. Install the square steel J to ensure that the shaft is inserted correctly, then install the gasket M and the external handle K in sequence

11



11. Move to the inside of the door, place spring N into the hole of inner handle O, add washer M, and connect the inner and outer handles with 2 screws P. Warning: Do not overtighten the screws when installing the handle (this may cause the lock to get stuck)

12



12. In the later stage, according to the actual application situation, the prompts on the key packaging box can be checked to complete the re debugging of the lock and ensure that the door can open and close smoothly.